



FONTAINE®
FIFTH WHEEL

PRODUCT CATALOG

Your only source for **NO-SLACK®** technology



We make it **EASY**



www.fifthwheel.com

Fontaine Fifth Wheel No-Slack®

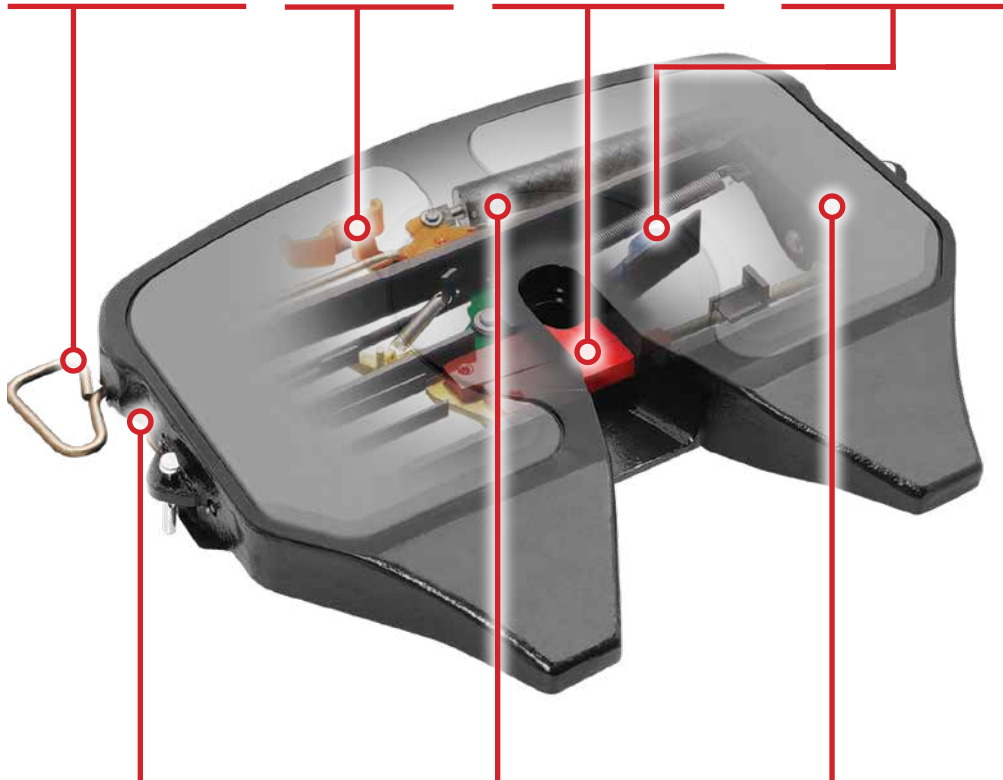
The world's only self-adjusting fifth wheel lock

Pull handle is the easiest to operate in the industry—no complicated opening sequence to remember

Built in secondary lock

No-Slack® lock is self-adjusting to give you a snug, secure connection

Locking trigger helps minimize high-hitching to reduce tractor, trailer and tire damage



Steel construction with a larger surface contact area for greater strength and stability

Optional in-cab air release* only opens when the parking brake is set.

Clean Connect™ reduces friction between the top plate and the trailer plate (available on 7000CC series)

**For new truck builds, Fontaine supplies an air cylinder in the fifth wheel. All other components for in-cab air release are supplied and installed by the truck OEM. For retrofitting standard release models, kits are available through Fontaine Parts Connection.*



For weight savings top plates, mounts and assemblies, look for this symbol.



For new innovative Fontaine Fifth Wheel products look for this symbol

Part Number Identification

This guide explains the nomenclature for Fontaine Fifth Wheel complete assembly part numbers.

See example part number at right:

SL6NWB675012

Release

SL = Side left
AA = Air actuated
BL = Blocked left (H7 only)
AL = Auto-lube left
SLE = Electronic lock indicator left (7000 only)

Top plate model

6 = No-Slack® 6000
7 = No-Slack® 7000
C = 7000CC Clean Connect
H7 = No-Slack® H7

Mounting Bracket model

NWB = Light weight outboard slide
BSL = Stationary bracket mount
PML = Adjustable plate mount
LWB = Light weight slide bracket
AWB = Air slide bracket
BLAWB = Blocked Air slide bracket
PS5 = Stationary short plate mount
BLPS5 = Blocked Stationary short plate mount

Mounting height

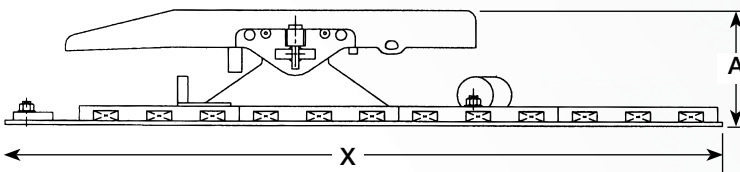
6750 = 6-3/4"
 Actual height from truck frame to top of fifth wheel.
 Examples:
 7125 = 7-1/8"
 7250 = 7-1/4"
 8375 = 8-3/8"
 9750 = 9-3/4"

Slide travel

12 = 12" slide
 Sliding fifth wheels only.
 Examples:
 12 = 12" slide
 24 = 24" slide
 36 = 36" slide
 48 = 48" slide

Measurements & Serial Number Location

How do I measure a fifth wheel?



The installed height of all Fontaine models is measured from the top of the truck frame to the top of the fifth wheel. For standard models dimension "A" is a part of the model number. For example, if dimension "A" in this diagram is 7.75 inches, it would appear in the model number as 7750 (Example: SL7AWB775024).

How do I find the serial number

Serial number engraved directly into the right side of fifth wheel skirt. Note: position 5 and 6 of the serial number indicates the year built. Serial number is always 9 digits.



No-Slack® right side view serial number location



No-Slack® Top Plate Options

No-Slack® 6000 series

50,000 pounds vertical load.
150,000 pounds drawbar pull.

The Fontaine 6000 Series pressed steel fifth wheel cuts weight without cutting performance or load rating. The proven design was made possible by Finite Element Analysis technology and strategic placement of high strength alloy steel. This lighter 6000 Series No-Slack® fifth wheel combined with NWB mounting bracket is approximately 60 lbs lighter with no reduction in load ratings. The 6000 features the same legendary No-Slack® locking technology. Lock automatically self-adjusts to the trailer kingpin for a smoother ride, lower maintenance costs and longer component life. The 6000 series is rated for standard to moderate duty on-highway use only, including tankers. Gross Combination Weight (GCW) is less than 115,000 lbs. (52,000 kgs). Some restrictions may apply please see LT-076 application guide on website for details.



No-Slack® 7000 series

55,000 pounds vertical load.
150,000 pounds drawbar pull.

The 7000 series offers all the benefits of our 6000 series, but in a cast design rather than pressed steel. It features the self-adjusting No-Slack® locking mechanism. The 7000 series is rated for standard to heavy duty applications with a Gross Combination Weight (GCW) less than 140,000 lbs. (63,500 kgs). Some restrictions may apply please see LT-076 application guide on website for details.



No-Slack® 7000CC series Clean Connect™

55,000 pounds vertical load.
150,000 pounds drawbar pull.

The 7000CC series Clean-Connect™ offers all the benefits of the 7000 series fifth wheels plus the added benefit of a grease free top plate surface. With Clean-Connect™ technology the fifth wheel no longer requires grease to lubricate between the top plate surface and the trailer coupling plate. This eliminates the labor costs, materials and downtime associated with greasing the top plate surface. The 7000CC series is rated for standard to heavy duty applications with a Gross Combination Weight (GCW) less than 140,000 lbs. (63,500 kgs). Some restrictions may apply please see LT-076 application guide on website for details.



No-Slack® H7 Heavy Duty Series

Rating on AWB mounts	Rating on PS5 mounts
62,500 lbs vertical load	70,000 lbs vertical load
150,000 pounds drawbar	200,000 pounds drawbar pull

The H7 Series offers all the benefits of No-Slack® technology in a steel reinforced cast housing. This rugged workhorse is rated for standard to severe duty applications with a Gross Combination Weight (GCW) that can exceed 140,000 lbs. (63,500 kgs). Some restrictions may apply please see LT-076 application guide on website for details. The H7 is also available as a blocked fifth wheel to accommodate frameless dump applications.



Fifth Wheel Assembly Options

Air Actuated

Fontaine's air actuated No-Slack® fifth wheels open with a release valve located on the dash.
(6000/7000/7000CC)

Specify "AA"

Air actuated models include an air cylinder



Slide Stops

Optional inserts to limit forward slide travel.

Consult Fontaine Fifth Wheel

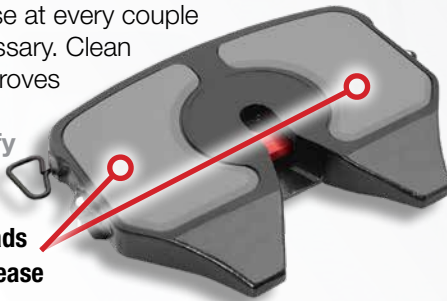


Clean Connect

Clean Connect™ insert pads act as a lubricant between the top plate surface and the trailer coupling plate without using any grease! Now you can lower operating cost because the grease and the labor to apply the grease at every couple is no longer necessary. Clean Connect also improves steer tire wear.

(7000CC). Specify "SLC Top Plate"

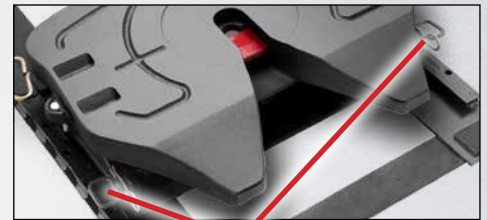
Clean Connect pads do not require grease



Blocked (No-tilt) Fifth Wheels

Some customers prefer the fifth wheel to be blocked which means the fifth wheel will not pivot forwards or backwards.

This is also known as a no-tilt fifth wheel. Blocked fifth wheels are especially recommended in frameless dump applications (H7). Specify "BL"



Convert your fifth wheel from blocked to tilting by pulling these pins.

Lock Sensing Technology (LST) Electronic Lock Indicator

This system improves driver awareness of the fifth wheel lock status. Two electronic sensors work together to let the driver know whether or not the kingpin is correctly positioned inside the locking mechanism. When the sensors indicate a successful coupling, a green light illuminates. After coupling, the system continuously monitors the connection and warns the driver with a red light if a change occurs.
(7000/7000CC).

Specify "SLE"



Special Stationary Mount Models



BSL



FMA-D64



FMAH



Scan code or search "oem" at fifthwheel.com and choose "Specialty stationary mounts"



Important Application Notes

Top plate selection notes:

- For No-Slack® features see page 2. For fifth wheel top plate selection guide see page 4. Air activated release styles are available on select models.

Mount selection notes:

- A sliding mount gives the owner more options. You can transfer weight between tractor axles, handle trailers with different kingpin settings, and vary vehicle combination lengths. A sliding mount fifth wheel also provides additional maneuverability, accommodates trailers with short landing gear clearance and allows the driver to extend the unit for maximum comfort when weight allows. If you choose a sliding mount, Fontaine offers a wide selection of slide lengths.

Stationary mount fifth wheels (plate or angle mounts) are an option and are ideal for applications where the trailer kingpin setting, axle loading and vehicle length all remain the same for the entire fleet. Stationary mount fifth wheels are usually lighter than sliding mount fifth wheels.

Important application notes:

- If any single restriction factor within your application is surpassed within a given duty level, the next duty level must be selected.
- For more information on standard, moderate and severe duty, please review the **duty class restrictions** on page 7.
- When selecting a fifth wheel, if the application or vehicle usage places the maximum capacity on a certain fifth wheel, then the selection of a fifth wheel with a higher capacity is advised. For example, a tractor that is at a maximum vertical load of 50,000 lbs in a moderate duty application should be using a fifth wheel with a vertical load capacity of 55,000 lbs or greater. This additional capacity should give better service life over a longer period of time.

Special applications:

- All logging, mining and oil field applications are considered severe duty. Do not select assemblies in the standard or moderate levels when a special application is designated.



Minimum static load warning:

- Minimum static load warning!!! The trailer that is attached to the fifth wheel should impose a consistent vertical load. Repeated negative loading (trying to pull the fifth wheel off of the brackets with the kingpin) is not allowed. A minimum static load applied to the fifth wheel through the trailer is 10% of the gross trailer weight. See the load rating for the specific fifth wheel for maximum vertical load values.



Van trailers



Tankers and bulk trailers



Flatbeds, stretch and stake trailers



Lowbed trailers



Framed end and frameless dump trailers

Important: Contact your OEM or Fontaine Fifth Wheel for more information on the right fifth wheel for your application. Please refer to the Fontaine Fifth Wheel warranty statement for important warranty information. Selecting assemblies in conflict with this application guide without prior written approval from Fontaine engineering voids all warranties. For more information about duty class restrictions and applications see LT-076: Application guide at fifthwheel.com in the Literature section. LT-001: Instruction manual is also available in the Literature section.

Duty Class Restrictions

With the Fontaine Fifth Wheel complete product line you can easily select the perfect fifth wheel for your application. We offer top plates and mounting options in a wide variety of sizes to handle even the most demanding applications.

To specify the right fifth wheel for your application two factors must be considered: load capacity and service conditions.

“Weight” refers to the amount of weight that a fifth wheel can handle. “Road type” refers to the operating environment and the type of equipment used in an application. “Travel type” refers to mileage between stops.

You don’t choose a top plate based on “weight” only. Consider service conditions because a heavy load pulled on a paved road places less stress on a fifth wheel than a lighter load pulled in severe off-highway conditions.

The duty class restriction chart at right and No-Slack® top plate options chart (page 4) can be used as a guide to help you select the right fifth wheel.

Fontaine has an application guide (LT-076) that can be obtained at: www.fifthwheel.com (Choose “Support” and then “Spec My Truck”).

If you need further assistance contact Fontaine Fifth Wheel at: 800-874-9780.



On-line selection guide is available. Scan code or go to: www.fifthwheel.com Choose “Support” then choose “Spec My Truck”

Standard Duty	
Weight:	Less than 95,000 lbs (43,000 kgs) gross combination weight (GCW)
Road type:	100% on-highway application on maintained concrete or asphalt roads
Travel type:	More than 30 miles between each couple
Axle limitation:	Maximum number of towed axles equals 3

Moderate Duty	
Weight:	Less than 115,000 lbs (52,000 kgs) gross combination weight (GCW)
Road type:	Less than 10% off-highway application on maintained concrete, asphalt, gravel or crushed rock roads
Travel type:	No minimum mileage between couples
Axle limitation:	Maximum number of towed axles equals 4

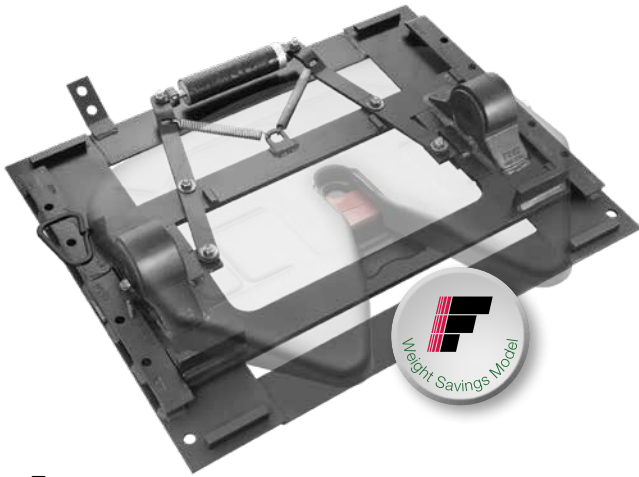
Heavy Duty	
Weight:	Less than 140,000 lbs. (63,500 kg.) gross combination weight (GCW)"
Road type:	Less than 10% off-highway application on maintained concrete, asphalt, gravel or crushed rock roads
Travel type:	No minimum mileage between couples.
Axle limitation:	No axle limitations

Severe Duty	
Weight:	More than 115,000 lbs (52,000 kgs) gross combination weight (GCW)
Road type:	Any off-highway application on all road types including non-maintained roads
Travel type:	No minimum mileage between couples
Axle limitation:	No axle limitations
Special applications:	All logging, mining and oil field applications fall into this category regardless of anticipated weight, road type or number of axles



Standard Duty Air Slide Assemblies

Light Weight Air Slide No-Slack® 6000 NWB Slide



No-Slack® 6000
50,000 pounds vertical load

Part Number	Fifth Wheel Height	Slide Length	Weight
SL6NWB675012	6-3/4"	12"	372 lbs
SL6NWB675024		24"	393 lbs
SL6NWB775012	7-3/4"	12"	378 lbs
SL6NWB775024		24"	399 lbs
SL6NWB875012	8-3/4"	12"	383 lbs
SL6NWB875024		24"	404 lbs

Options

- Air actuated (replace **SL** with **AA**): add 5 lbs

Features

- Innovative weight saving design makes the NWB the lightest steel slide system available – helps fleets offset heavy emission system components
- 40-70 lbs lighter than competitive slide systems
- Improved fuel economy and low up-charge make the NWB very attractive to weight-sensitive, cost-conscious fleets
- Computer-aided design features a smaller footprint with steel reinforcement for strength and durability
- New greaseless bracket liner provides consistent lubrication, reduces wear (no metal-to-metal contact) and cuts maintenance costs
- Dual durometer two-piece bushing for improved shock absorption and easier maintenance

Standard/Moderate Duty Plate Mount Assemblies

Adjustable Plate Mount No-Slack® 6000, 7000 & 7000CC PML



6000

50,000 pounds
vertical load



7000

55,000 pounds
vertical load



7000CC

55,000 pounds
vertical load

6000 PML Part Number	7000 PML Part Number (Add 39 lbs)	7000CC PML Part Number (Add 42 lbs)	Fifth Wheel Height	6000 Weight
SL6PML6250	SL7PML6250	SLCPML6250	6-1/4"	279 lbs
SL6PML7250	SL7PML7250	SLCPML7250	7-1/4"	286 lbs
SL6PML8250	SL7PML8250	SLCPML8250	8-1/4"	294 lbs
SL6PML9250	SL7PML9250	SLCPML9250	9-1/4"	299 lbs
SL6PML10250	SL7PML10250	SLCPML10250	10-1/4"	325 lbs

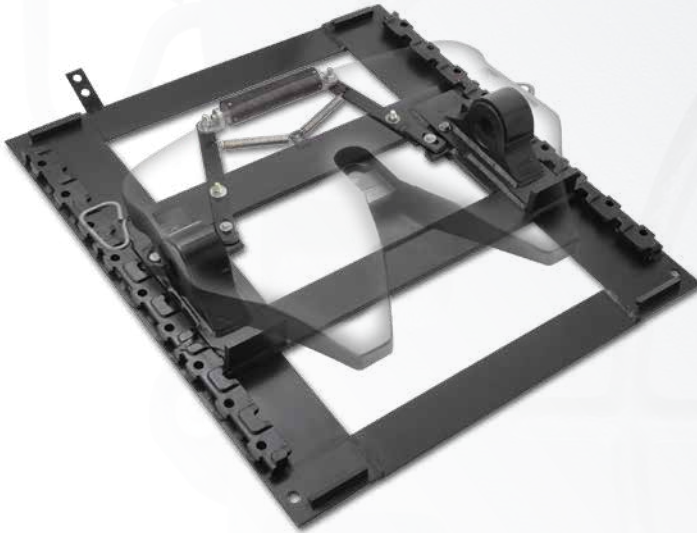
Options (See pages 5)

- Air actuated (replace **SL** with **AA**): add 5 lbs
- Auto-lube left (replace **SL** with **AL**) Auto-lube models are drilled and tapped for lube system (7000/7000CC)
- LST Electronic lock indicator left (replace **SL** with **SLE**) (7000/7000CC)
- Computer designed cast bracket for lighter weight and greater strength
- Brackets are welded to a 3/8" steel plate that has six bolt holes on each side

Standard/Moderate Duty Air Slide Assemblies

Air Slide

No-Slack® 6000, 7000 & 7000CC LWB



6000
50,000 pounds
vertical load

7000
55,000 pounds
vertical load

7000CC Clean
Connect
55,000 pounds
vertical load

6000 LWB Part Number	7000 LWB Part Number (Add 36 lbs)	7000CC LWB Part Number (Add 39 lbs)	Fifth Wheel Height	Slide Length	6000 Weight
SL6LWB675012	SL7LWB675012	SLCLWB675012	6-3/4"	12"	402 lbs
SL6LWB675016	SL7LWB675016	SLCLWB675016		16"	416 lbs
SL6LWB675024	SL7LWB675024	SLCLWB675024		24"	422 lbs
SL6LWB675036	SL7LWB675036	SLCLWB675036		36"	450 lbs
SL6LWB675048	SL7LWB675048	SLCLWB675048		48"	472 lbs
SL6LWB725012	SL7LWB725012	SLCLWB725012	7-1/4"	12"	405 lbs
SL6LWB725016	SL7LWB725016	SLCLWB725016		16"	419 lbs
SL6LWB725024	SL7LWB725024	SLCLWB725024		24"	425 lbs
SL6LWB725036	SL7LWB725036	SLCLWB725036		36"	453 lbs
SL6LWB725048	SL7LWB725048	SLCLWB725048		48"	475 lbs
SL6LWB825012	SL7LWB825012	SLCLWB825012	8-1/4"	12"	410 lbs
SL6LWB825016	SL7LWB825016	SLCLWB825016		16"	424 lbs
SL6LWB825024	SL7LWB825024	SLCLWB825024		24"	430 lbs
SL6LWB825036	SL7LWB825036	SLCLWB825036		36"	458 lbs
SL6LWB825048	SL7LWB825048	SLCLWB825048		48"	480 lbs
SL6LWB925012	SL7LWB925012	SLCLWB925012	9-1/4"	12"	415 lbs
SL6LWB925016	SL7LWB925016	SLCLWB925016		16"	429 lbs
SL6LWB925024	SL7LWB925024	SLCLWB925024		24"	435 lbs
SL6LWB925036	SL7LWB925036	SLCLWB925036		36"	463 lbs
SL6LWB925048	SL7LWB925048	SLCLWB925048		48"	485 lbs
SL6LWB1025012	SL7LWB1025012	SLCLWB1025012	10-1/4"	12"	420 lbs
SL6LWB1025016	SL7LWB1025016	SLCLWB1025016		16"	434 lbs
SL6LWB1025024	SL7LWB1025024	SLCLWB1025024		24"	440 lbs
SL6LWB1025036	SL7LWB1025036	SLCLWB1025036		36"	468 lbs
SL6LWB1025048	SL7LWB1025048	SLCLWB1025048		48"	490 lbs

Features

- Innovative weight saving design is lighter than its predecessor without losing an ounce of capacity!
- Save 20 to 50 lbs depending on configuration
- Computer-aided design features a smaller footprint with steel reinforcement for strength and durability
- New greaseless bracket liner provides consistent lubrication, reduces wear (no metal-to-metal contact) and cuts maintenance costs
- Two-inch slide increments give you greater versatility for improved payload distribution
- Quad-Lock four-point locking system increases locking surface area for greater stability and improved wear characteristics
- Automatically removes slack from the slide assembly for a smoother ride and longer life
- Dual durometer two-piece bushing for improved shock absorption and easier maintenance

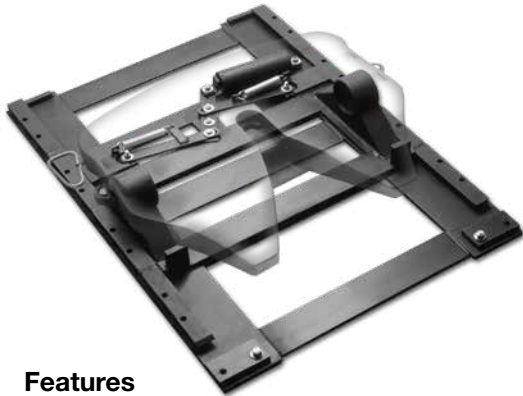
Options (see page 5)

- Air actuated (replace **SL** with **AA**): add 5 lbs
- Auto-lube left (replace **SL** with **AL**) Auto-lube models are drilled and tapped for lube system (7000/7000CC)
- LST Electronic lock indicator left (replace **SL** with **SLE**) (7000/7000CC)



Severe Duty Air Slide Assemblies

Air Slide No-Slack® 7000 & H7 AWB



7000
55,000 pounds
vertical load
150,000 pounds
drivebar pull

H7
62,500 pounds
vertical load
150,000 pounds
drivebar pull

Features

- The Fontaine AWB air slide bracket makes adjustments faster and easier than ever before
- A great solution for customers who reposition the fifth wheel after every load
- An air cylinder drives a mechanical linkage to release the slide locking wedges
- To protect the stainless steel shaft from corrosion, bending and roadspray, the unit operates from a closed position

7000 AWB Part Number	H7 AWB Part Number (Add 70lbs)	Fifth Wheel Height	Slide Length	Weight
SL7AWB775012	SLH7AWB775012	7-3/4"	12"	487 lbs
SL7AWB775016	SLH7AWB775016		16"	494 lbs
SL7AWB775020	SLH7AWB775020		20"	498 lbs
SL7AWB775024	SLH7AWB775024		24"	502 lbs
SL7AWB775036	SLH7AWB775036		36"	521 lbs
SL7AWB775048	SLH7AWB775048	48"	556 lbs	
SL7AWB875012	SLH7AWB875012	8-3/4"	12"	493 lbs
SL7AWB875016	SLH7AWB875016		16"	500 lbs
SL7AWB875020	SLH7AWB875020		20"	504 lbs
SL7AWB875024	SLH7AWB875024		24"	508 lbs
SL7AWB875036	SLH7AWB875036		36"	527 lbs
SL7AWB875048	SLH7AWB875048	48"	562 lbs	
SL7AWB975012	SLH7AWB975012	9-3/4"	12"	499 lbs
SL7AWB975016	SLH7AWB975016		16"	506 lbs
SL7AWB975020	SLH7AWB975020		20"	510 lbs
SL7AWB975024	SLH7AWB975024		24"	514 lbs
SL7AWB975036	SLH7AWB975036		36"	533 lbs
SL7AWB975048	SLH7AWB975048	48"	568 lbs	
SL7AWB1075012	SLH7AWB1075012	10-3/4"	12"	519 lbs
SL7AWB1075016	SLH7AWB1075016		16"	526 lbs
SL7AWB1075020	SLH7AWB1075020		20"	530 lbs
SL7AWB1075024	SLH7AWB1075024		24"	534 lbs
SL7AWB1075036	SLH7AWB1075036		36"	553 lbs
SL7AWB1075048	SLH7AWB1075048	48"	588 lbs	

Blocked (No-Tilt) Air Slide No-Slack® H7 Blocked AWB



H7
62,500 pounds vertical load
150,000 pounds drivebar pull

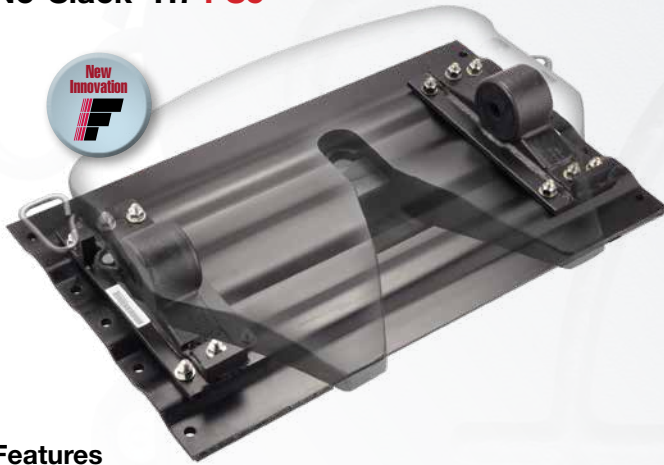
Features

- The Fontaine Blocked AWB has all of the same great features of the standard AWB above, plus the special "blocked" feature that enables the mount to be used in frameless dump applications

H7 Blocked AWB Part Number	Fifth Wheel Height	Slide Length	Weight	H7 Blocked AWB Part Number	Fifth Wheel Height	Slide Length	Weight
BLH7AWB775012	7-3/4"	12"	602 lbs	BLH7AWB975012	9-3/4"	12"	620 lbs
BLH7AWB775016		16"	610 lbs	BLH7AWB975016		16"	628 lbs
BLH7AWB775024		24"	622 lbs	BLH7AWB975024		24"	640 lbs
BLH7AWB775036		36"	642 lbs	BLH7AWB975036		36"	660 lbs
BLH7AWB775048		48"	669 lbs	BLH7AWB975048		48"	687 lbs
BLH7AWB875012	8-3/4"	12"	611 lbs	BLH7AWB1075012	10-3/4"	12"	643 lbs
BLH7AWB875016		16"	619 lbs	BLH7AWB1075016		16"	651 lbs
BLH7AWB875024		24"	631 lbs	BLH7AWB1075024		24"	663 lbs
BLH7AWB875036		36"	651 lbs	BLH7AWB1075036		36"	683 lbs
BLH7AWB875048		48"	678 lbs	BLH7AWB1075048		48"	710 lbs

Severe Duty Assemblies

Reinforced Stationary Plate No-Slack® H7 PS5



H7
70,000 pounds vertical load
200,000 pounds drivebar pull

H7 PS5 Part Number	Fifth Wheel Height	Weight
SLH7PS58375	8-3/8"	500 lbs
SLH7PS59375	9-3/8"	504 lbs
SLH7PS510375	10-3/8"	508 lbs
SLH7PS511375	11-3/8"	526 lbs

Features

- Fontaine PS5 steel reinforced stationary plate mount is perfect for hauling heavy loads
- Corrugated design features additional structural steel reinforcement for greater stability
- Gives you the extra strength you need to handle severe service applications

Blocked (No-Tilt) Reinforced Stationary Plate No-Slack® H7 Blocked PS5



H7
70,000 pounds vertical load
200,000 pounds drivebar pull

H7 Blocked PS5 Part Number	Fifth Wheel Height	Weight
BLH7PS58375	8-3/8"	509 lbs
BLH7PS59375	9-3/8"	514 lbs
BLH7PS510375	10-3/8"	521 lbs
BLH7PS511375	11-3/8"	528 lbs

Features

- The Fontaine Blocked PS5 has all of the strength of the standard PS5 plus a special "blocked" (no tilt) feature that enables the mount to be used in frameless dump applications
- Corrugated design features additional structural steel reinforcement for greater stability
- Gives you the extra strength you need to handle heavy loads and severe service applications

Mount	Description	Width x length	Holes per side	Hole spacing across frame	First hole measured from rear, then spacing between holes
PS5	Plate short	40.00" x 23.75"	5 (for 5/8" hardware)	38"	1.88", 6.00" - 4.00" - 4.00" - 6.00"



What is the warranty coverage?

Fontaine's warranty is for five years covering parts for material and workmanship. There are a few exceptions. See our existing warranty statement or call us at 800-874-9780 for more information. Warranty document is at www.fifthwheel.com (Choose "Support" and then "Warranty").

What is the recommended maintenance procedure?

Recommended maintenance is at least every 90 days or 30,000 miles. All recommended practices are located in the Fifth Wheel Handbook supplied with every unit shipped or may be obtained at www.fifthwheel.com (Choose "Support" and then "Helpful information" LT-001 Instruction Handbook).

What if my fifth wheel is hard to open?

Make sure a pre-service lubrication has been completed before unit is put in service. Make sure the driver is backing tight against the trailer after setting the trailer brakes. This will reduce any tension or pressure on the locking jaw and wedge.

DO NOT dump chassis air bags before uncoupling from trailer. Make sure the wedge-stop rod is properly set to the recommended gap. Make sure the truck and trailer are not in a bind or twist (No daylight between top plate and trailer plate). Check for any lower mount obstructions or interference underneath the wheel. Check for damage to the fifth wheel.

Can I change the height of my fifth wheel?

Changing fifth wheel height can be as simple as changing the brackets. It all depends on the type of application, style of fifth wheel and the type of existing base. These factors will determine just how high or low you can go.

How much wear is allowed for a kingpin?

According to SAE J2228 - Kingpin Wear Limits, if the upper shoulder which is 2.875" new or the smaller 2" diameter is worn more than .125 (1/8)" the kingpin should be replaced.

Does Fontaine provide a kingpin tool?

Yes! Go to "www.fifthwheel.com/wtb" to find out where you can purchase the No-Slack® test kingpin tool near you (part number KITKPT).



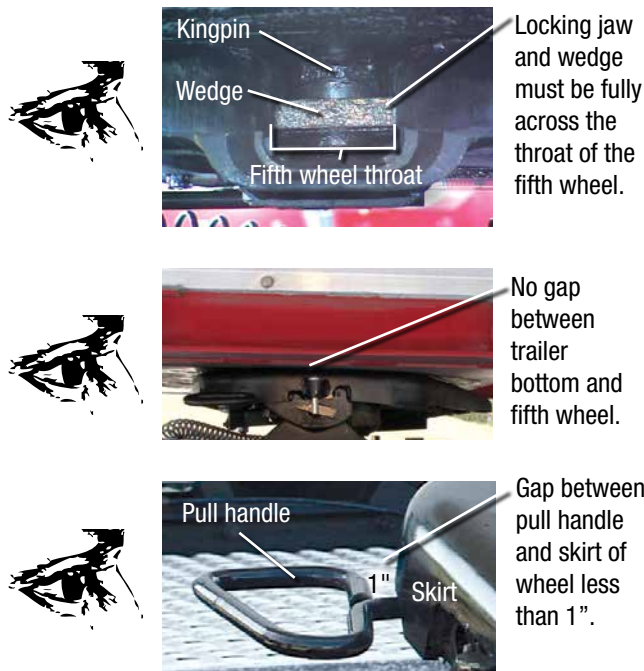
How can I tell if my fifth wheel is properly locked?

Verify secure coupling with a "tug test", by easing the tractor forward, with the trailer brakes on, to feel resistance of the load. Set the parking brakes on the tractor and trailer and get out of the tractor and visually inspect, using a flashlight, that the fifth wheel is properly closed.

IMPORTANT: Improperly coupled fifth wheel may in some circumstances be able to pass a "tug test". A visual inspection is always required.

The locking jaw and wedge must be fully across the throat of the fifth wheel, there must be no gap between the fifth wheel and the trailer plate, and the pull handle must be within 1" or less from the skirt of the fifth wheel. All three areas of the fifth wheel must be inspected to ensure that the fifth wheel is properly coupled.

Below are three critical areas of visual inspection that drivers must perform after every couple.



If the visual inspection indicates that you failed to obtain a proper couple, open the fifth wheel, inspect for damaged components, and repeat the coupling sequence.