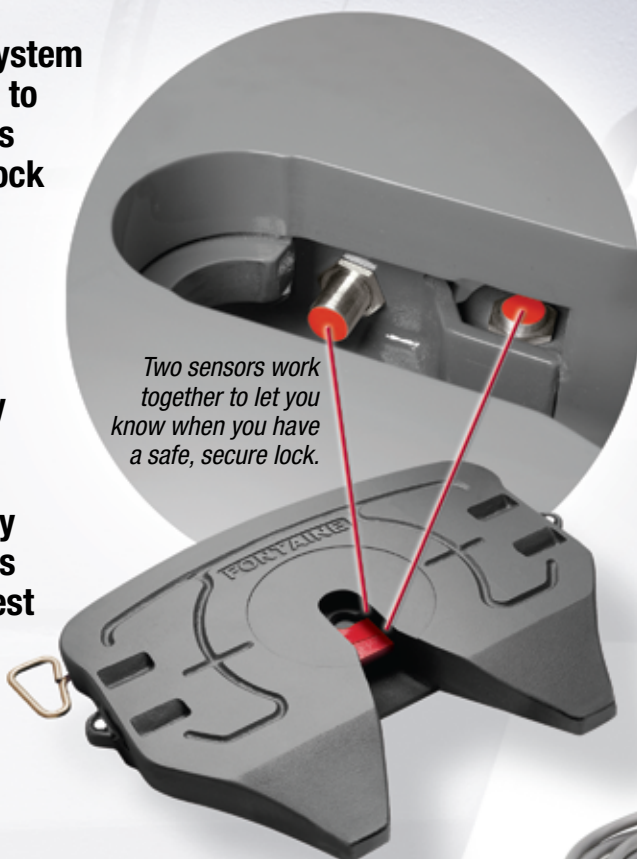


# Get a lock on the latest Technology

## Fontaine **SmartLock™**

- The Fontaine SmartLock™ System uses two electronic sensors to let you know if the kingpin is correctly positioned in the lock
- Improves driver safety and prevents false coupling
- Reduces the possibility of personal injury and property damage
- Provides an additional safety check to supplement driver's visual inspection and pull-test
- Rugged design and construction for maximum reliability, durability and performance



*Two sensors work together to let you know when you have a safe, secure lock.*



*The in-cab light illuminates green with a successful coupling. Then the system monitors the sensors and warns the driver with a red light if a change occurs.*

[www.fifthwheel.com](http://www.fifthwheel.com)

  
**FONTAINE**  
INTERNATIONAL®

CONNECT YOUR BUSINESS WITH FONTAINE®

Fontaine International • 5000 Grantswood Road • Irondale, AL 35210 • 800-874-9780 • Fax 205-421-4400

[www.fifthwheel.com](http://www.fifthwheel.com)