

Fontaine Fifth Wheel No-Slack® 7000/6000 Retractable Handle Models

Retractable Handle Rebuild Procedures

- Disassembly
- Assembly
 - Retractable handle
 - Visual lock indicator



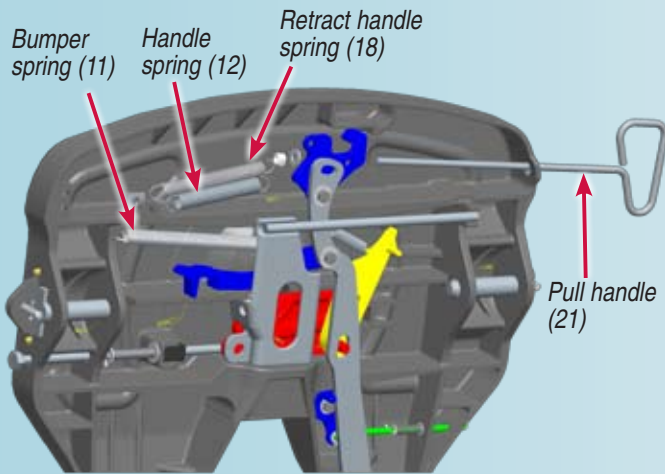
www.fifthwheel.com • 800-874-9780

Retract handle disassembly

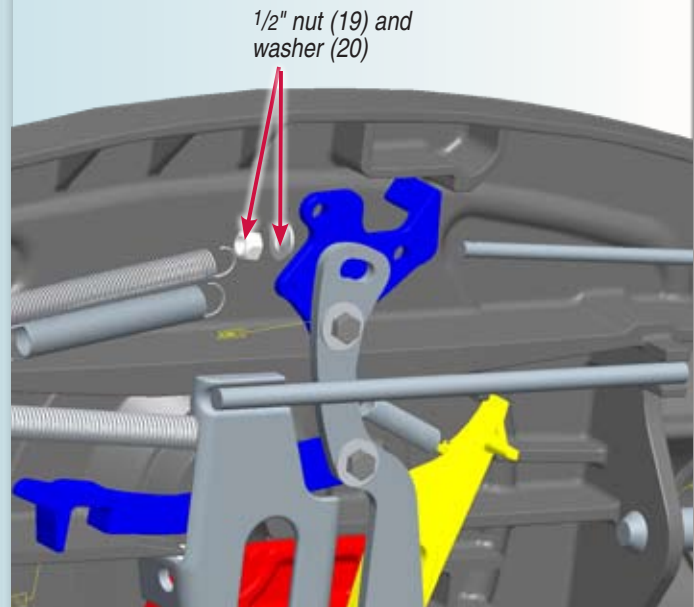
Refer to exploded view of assembly on page 6-7 to identify item number and parts.

Degrease fifth wheel before installing new parts

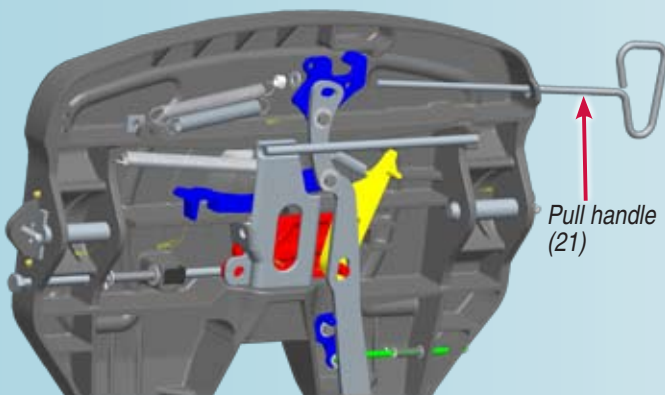
1. Remove handle spring, bumper spring and retract handle spring.



2. Remove 1/2" nut and washer from pull handle.



3. Remove the pull handle and inspect, making sure it is straight.

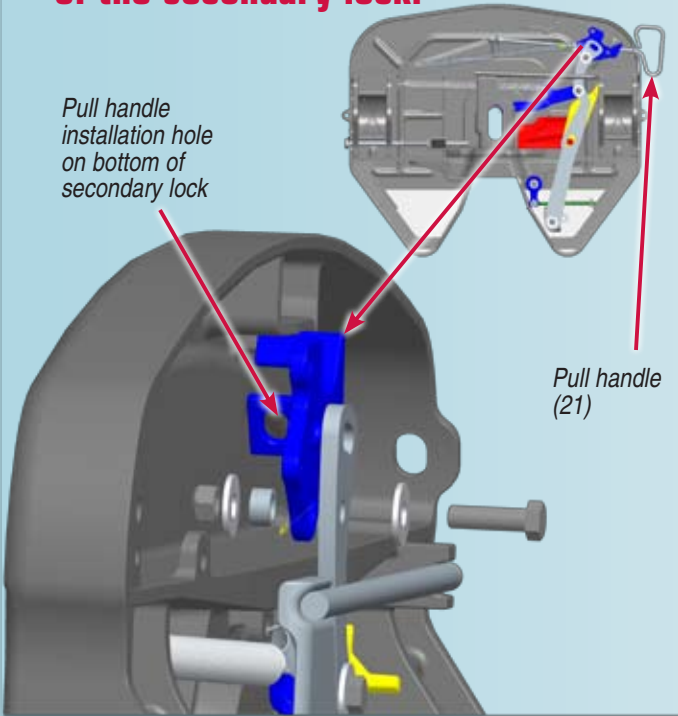


Retract handle assembly*

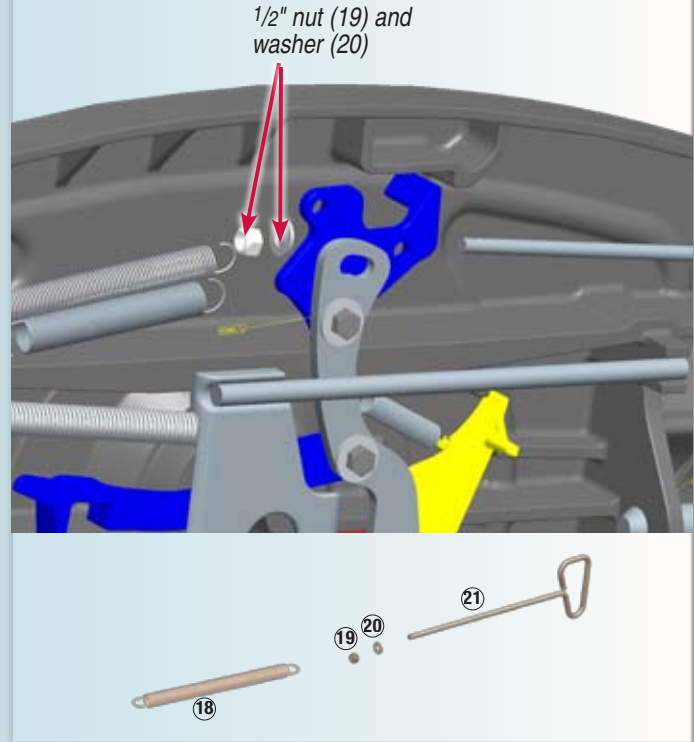
Refer to exploded view of assembly on page 6-7 to identify item number and parts.

Adequate lubrication should be used

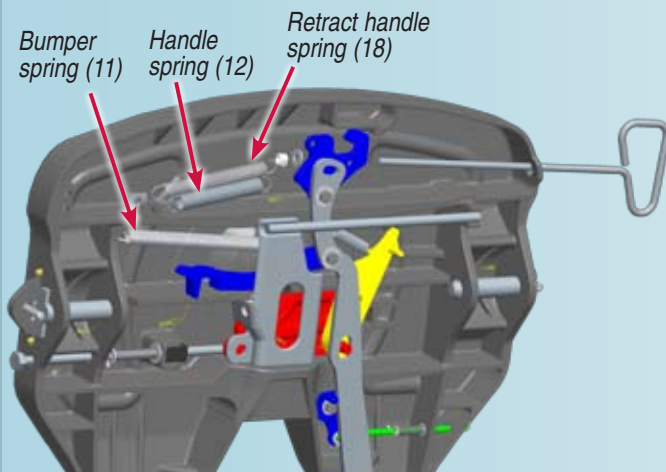
1. Install pull handle into bottom hole of the secondary lock.



2. Install the new washer and 1/2" nut.



3. Attach handle spring, bumper spring and retract handle spring.

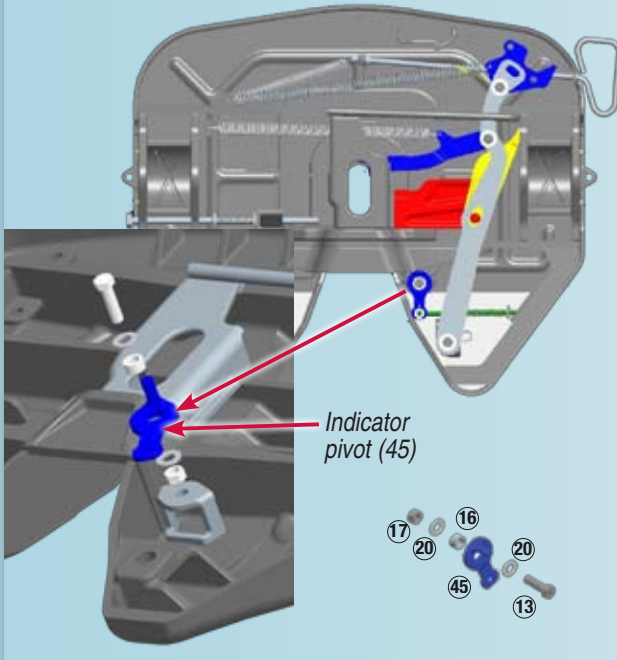


* Before rebuilding the assembly, check to make sure that there are no cracks in the crossmembers or other components. Also check bracket pin holes to ensure they are not overly worn (pins should fit snugly). Refer to exploded view of assembly on page 6-7 to identify item numbers and parts.

Lock indicator assembly

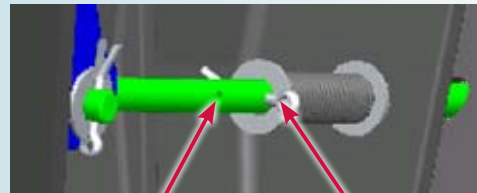
Refer to exploded view of assembly on page 6-7 to identify item number and parts.

1. Using the existing bolt, washer and bushing, install the lock indicator pivot to the lock indicator pivot mount. *Note: See drawing orientation of bolt.*



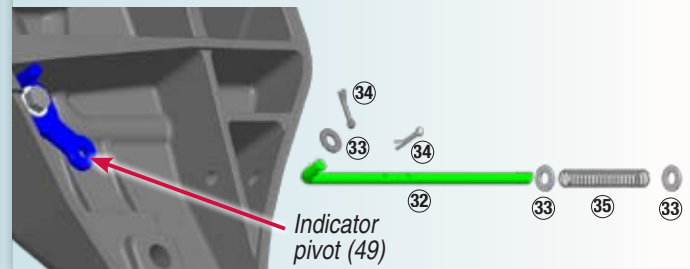
2. Remove lock indicator.

Install cotter pin (34) into outside hole of the lock indicator for 7000 series or 6000 series as shown. Install indicator rod washer (33) and spring (35) onto the indicator rod (32). Insert the straight end of the rod into the side of the fifth wheel. Insert the curved end of the rod into the indicator pivot (49). Install washer (33) and cotter pin (34).

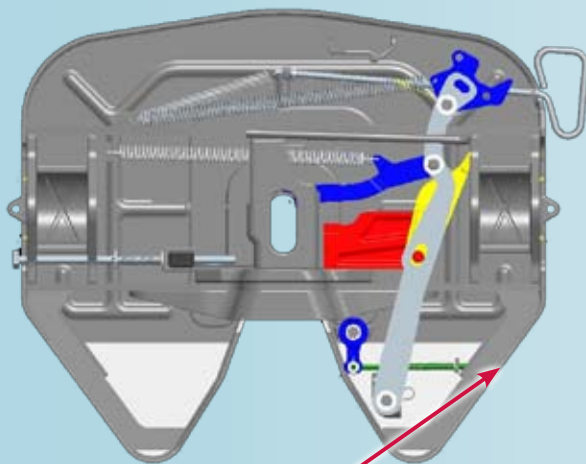


6000 series cotter pin placement

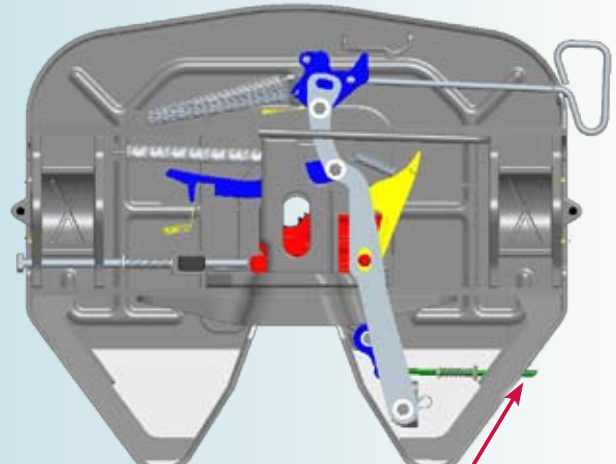
7000 series cotter pin placement (shown)



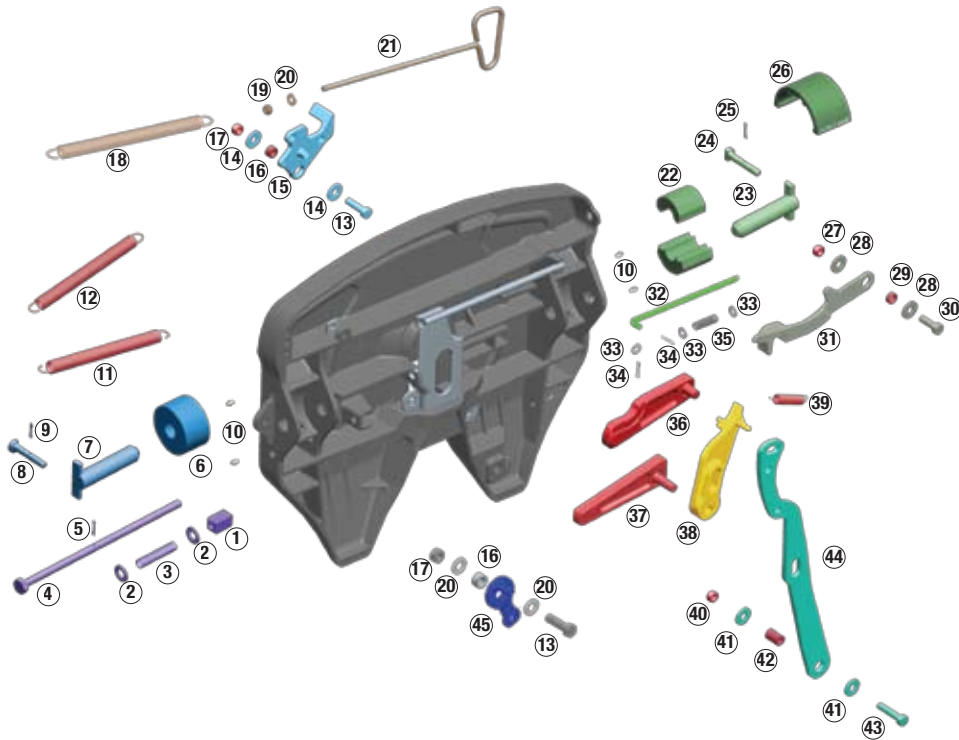
3. Check for proper operation.



Note: Lock indicator is retracted and not exposed indicating the fifth wheel is NOT locked.



Note: Lock indicator is extended and visually exposed indicating fifth wheel is locked.



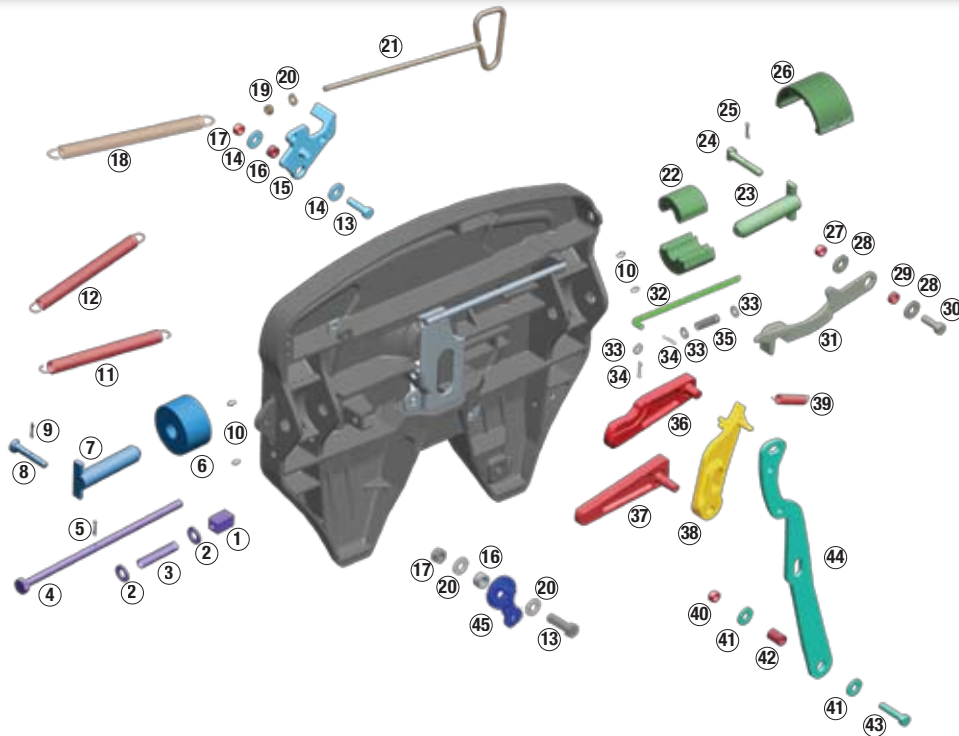
Retract wheel visual indicator kit (KIT-SRV or KIT-SLV)

Item	Description	Quantity
32	Indicator rod	1
35	Indicator spring	1
33	Flat washer, 3/8"	3
34	Cotter pin	2

Retract pull handle kit (right and left) (KIT-PUL-R)

Item	Description	Quantity
21	Retract pull handle	1
20	Flat washer, 1/2" I.D.	1
19	Hex lock nut, 1/2" - 13	1
18	Retract handle spring	1

Item	Description	Quantity	Item	Description	Quantity
1	Wedge-stop rod nut	1	24	Bracket retainer pin	2
2	Flat washer, 5/8" I.D.	2	25	Cotter pin	2
3	Wedge-stop rod spring	1	26	Bracket liner	2
4	Wedge-stop rod	1	27	Hex lock nut, 1/2" - 13	1
5	Cotter pin, 3/16" x 1"	1	28	Flat washer, 1/2" I.D.	2
6	1-piece bushing	2	29	Bushing	1
7	Bracket pin	2	30	Hex head bolt, 1/2" - 13	1
8	Bracket retainer pin	2	31	Bumper	1
9	Cotter pin	2	32	Indicator rod	1
10	Grease fittings	4	33	Flat washer, 3/8"	3
11	Bumper spring	1	34	Cotter pin	2
12	Handle spring	1	35	Indicator spring	1
13	Hex head bolt, 1/2" - 13	1	36	Step jaw	1
14	Flat washer, 1/2" I.D.	2	37	Wedge	1
16	Bushing, 7/16"	1	38	Timer	1
15	Secondary lock	1	39	Timer spring	1
17	Hex lock nut, 1/2" - 13	1	40	Hex lock nut, 1/2" - 13	1
18	Retract handle spring	1	41	Flat washer, 1/2" I.D.	2
19	Hex lock nut, 1/2" - 13	1	42	Bushing, 1 1/4"	1
20	Flat washer, 1/2" I.D.	1	43	Hex head bolt, 1/2" - 13	1
21	Retract pull handle	1	44	Operating handle	1
22	2-piece bushing	2 Pairs	45	Indicator pivot	1
23	Bracket pin	2			



Rebuild kit (KIT-RPR-6000L or R)		
Item	Description	Quantity
11	Bumper spring	1
12	Handle spring	1
39	Timer spring	1
36	Step jaw	1
37	Wedge	1
16	Bushing, 7/16"	1
29	Bushing, 5/16"	1
42	Bushing, 1 1/4"	1
17/27/40	Hex lock nut, 1/2" - 13	3

Wedge-stop rod kit (KIT-ROD-1108)		
Item	Description	Quantity
1	Wedge-stop rod nut	1
2	Flat washer, 5/8" I.D.	2
3	Wedge-stop rod spring	1
4	Wedge-stop rod	1
5	Cotter pin, 3/16" x 1"	1

Bracket pin kit (KIT-PIN-191)*		
Item	Description	Quantity
6	1-piece bushing	2
7	Bracket pin	2
8	Bracket retainer pin	2
9	Cotter pin	2

Bracket pin kit (KIT-PIN-LLB)*		
Item	Description	Quantity
22	2-piece bushing	2 Pairs
23	Bracket pin	2
24	Bracket retainer pin	2
25	Cotter pin	2
26	Bracket liner	2

Spring kit (KIT-SPRING)		
Item	Description	Quantity
11	Bumper spring	1
12	Handle spring	1
39	Timer spring	1

Bumper kit (KIT-BPR-6000L or R)		
Item	Description	Quantity
27	Hex lock nut, 1/2" - 13	1
28	Flat washer, 1/2" I.D.	2
29	Bushing	1
30	Hex head bolt, 1/2" - 13	1
31	Bumper	1
11	Bumper spring	1

Secondary lock kit (KIT-LAT-6000L or R)		
Item	Description	Quantity
12	Handle spring	1
13	Hex head bolt, 1/2" - 13	1
14	Flat washer, 1/2" I.D.	2
16	Bushing, 7/16"	1
15	Secondary lock	1
17	Hex lock nut, 1/2" - 13	1
	Cotter pin, 3/16" x 1"	1

Timer kit (KIT-TMR-6000L or R)		
Item	Description	Quantity
39	Timer spring	1
38	Timer	1
40	Hex lock nut, 1/2" - 13	1
	Hair pin cotter (not pictured)	1

Operating handle kit (KIT-OPR-6000)		
Item	Description	Quantity
16	Bushing, 7/16"	1
29	Bushing, 5/16"	1
42	Bushing, 1 1/4"	1
17/27/40	Hex lock nut, 1/2" - 13	3
41	Flat washer, 1/2" I.D.	2
43	Hex head bolt, 1/2" - 13	1
44	Operating handle	1
	Hair pin cotter (not pictured)	1

* Bracket pin choice depends on mount. You would only choose KIT-PIN-191 or KIT-PIN-LLB, not both.

For rebuilding the entire fifth wheel see LT-003 also.



Fontaine Parts Connection • 7574 Commerce Circle • Trussville, AL 35173
800-874-9780 • Fax: 205-655-9982

www.fifthwheel.com