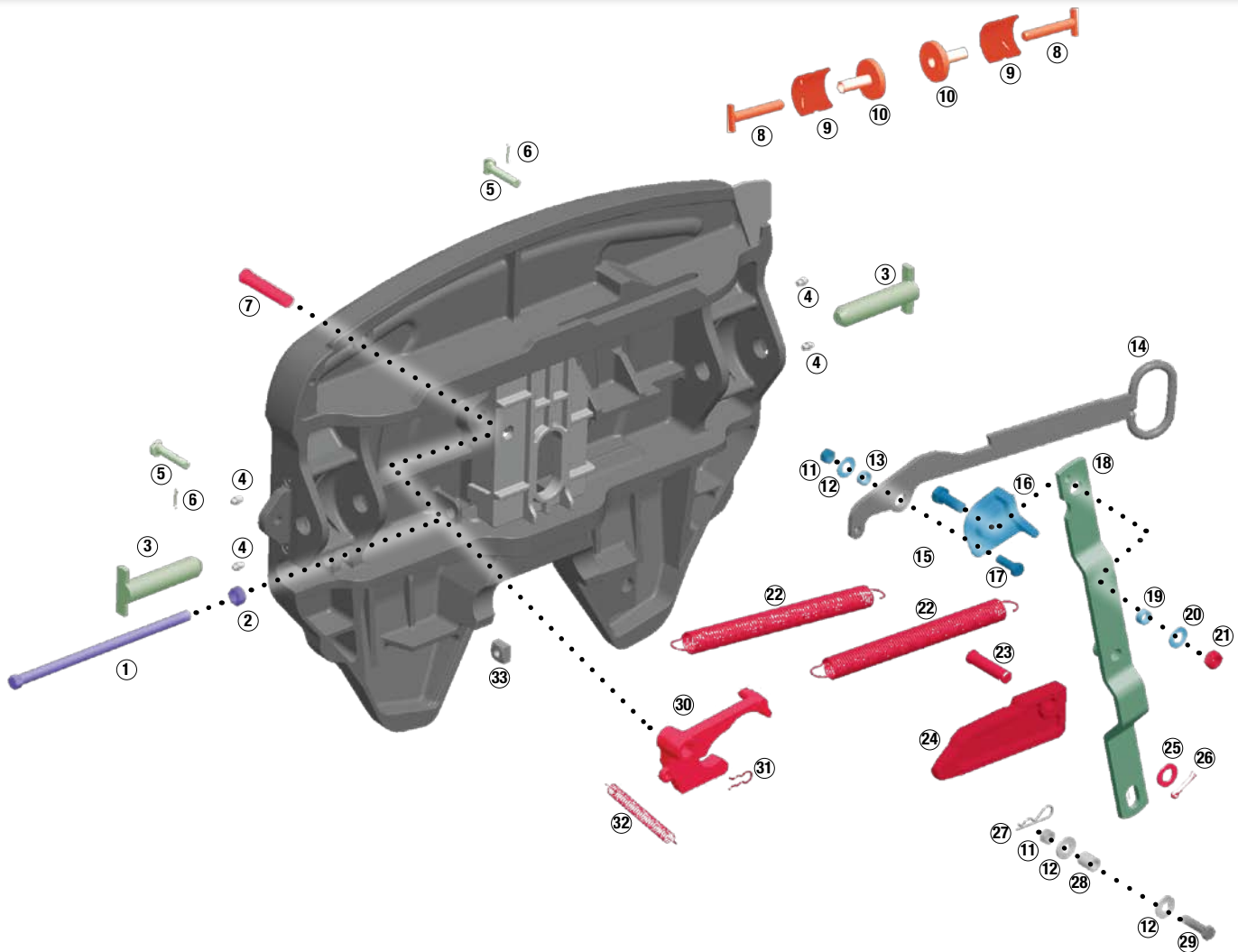


Ultra HD and Ultra HR rebuild diagram



Repair kit (KIT-RPR-UHH-L)

Item	Description	Quantity
30	Rotating locking jaw	1
32	Jaw spring	1
7	Pivot pin, long	1
31	Pivot pin clip	1
23	Pivot pin, short	1
24	Locking wedge	1
22	Main spring	2
21	Lock nut, 5/8-11	1
25	Washer, 3/4"	1
26	Cotter pin	1

Spring kit (KIT-SPR-ULHH)

22	Main spring	2
32	Jaw spring	1

Adjuster rod kit (KIT-ROD-UHH)

1	Adjustment rod	1
2	Adjustment rod nut	1

Pull handle kit (KIT-PUL-UL-L)

14	Pull handle	1
17	Hex head bolt, 1/2"-13 x 1.5"	1
11	Lock nut, 1/2"-13	1
12	Washer, 1/2"	1
13	Bushing, 5/16"	1

Secondary lock kit (KIT-SEC-ULHH-L) Ultra LT, Ultra HD and Ultra HR

Item	Description	Quantity
16	Secondary lock	1
15	Hex head bolt, 5/8-11 x 1.75	1
19	Spacer bushing	1
20	Flat washer 5/8"	1
21	Lock nut, 5/8-11	1
17	Hex head bolt, 1/2-13 X 1.5	1
13	Bushing, 5/16"	1
12	Washer, 1/2"	1
11	Lock nut, 1/2"	1

Operating lever kit (KIT-OPR-UL)

18	Operating handle	1
15	Hex head bolt, 5/8"-11 x 1.75"	1
19	Spacer bushing	1
20	Flat washer 5/8"	1
23	Pivot pin, short	1
25	Washer, 3/4"	1
26	Split cotter pin	1

Ultra HD mounting pin kit (KIT-PIN-UHD)

Item	Description	Quantity
3	Bracket pin	2
5	Bracket retainer pin	2
6	Cotter Pin	2

Ultra HR mounting pin kit for Holland lower assemblies (KIT-PIN-UHR-H)

Item	Description	Quantity
8	Bracket pin	2
5	Bracket retainer pin	2
6	Cotter pin	2
9	Holland bracket liner	2

Ultra HR mounting pin kit for Fontaine lower assemblies (KIT-PIN-UHR-F)

Item	Description	Quantity
8	Bracket pin	2
5	Bracket retainer pin	2
6	Cotter pin	2
10	Fontaine bracket spacer	2

Ultra HD and Ultra HR diagram key

Item	Description	Quantity
①	Adjustment rod	1
②	Adjustment rod nut	1
③	Bracket pin	2
④	Grease fitting	4
⑤	Bracket retainer pin	2
⑥	Cotter Pin	2
⑦	Pivot pin, long	1
⑧	Bracket pin	2
⑨	Holland bracket liner	2
⑩	Fontaine bracket spacer	2
⑪	Lock nut, 1/2"	1
⑫	Washer, 1/2"	1
⑬	Bushing, 5/16"	1
⑭	Pull handle	1
⑮	Hex head bolt, 5/8-11 x 1.75	1
⑯	Secondary lock	1
⑰	Hex head bolt, 1/2"-13 x 1.5"	1
⑱	Operating handle	1
⑲	Spacer bushing	1
⑳	Flat washer 5/8"	1
㉑	Lock nut, 5/8-11	1
㉒	Main spring	2
㉓	Pivot pin, short	1
㉔	Locking wedge	1
㉕	Washer, 3/4"	1
㉖	Cotter pin	1
㉗	Hair pin cotter	1
㉘	Pivot spacer	1
㉙	Hex head bolt, 1/2-13 x 2.00	1
㉚	Rotating locking jaw	1
㉛	Pivot pin clip	1
㉜	Jaw spring	1
㉝	Ultra HR spacer	1