

# FONTAINE NO-SLACK®

## 6000LWB

For over-the-road standard duty applications  
2 inch slide increments

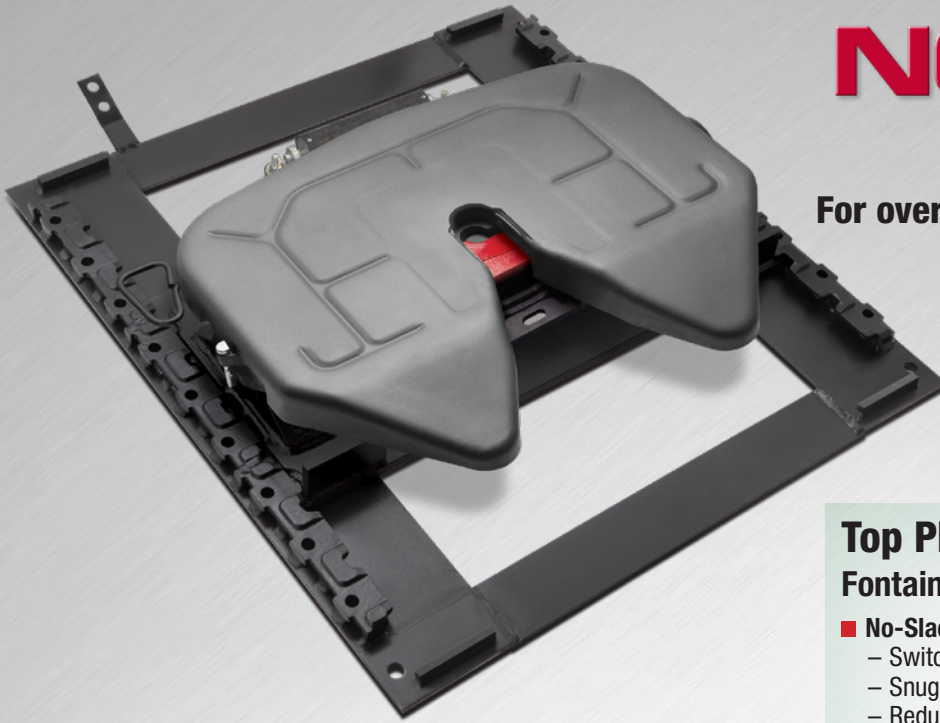
Standard/Moderate duty

On highway only

50,000 lbs vertical load

150,000 lbs drawbar pull

Approx top plate weight 220 lbs



### Mounting Bracket

#### Fontaine LWB Light Weight Air Slide Bracket

- Innovative weight saving design is lighter than its predecessor without losing an ounce of capacity— Save 20 to 50 lbs depending on configuration
- Computer-aided design features a smaller footprint with steel reinforcement for strength and durability
- New greaseless bracket liner provides consistent lubrication, reduces wear (no metal-to-metal contact) and cuts maintenance costs
- Two-inch slide increments give you greater versatility for improved payload distribution
- Quad-Lock four-point locking system increases locking surface area for greater stability and improved wear characteristics
- Automatically removes slack from the slide assembly for a smoother ride and longer life
- Dual durometer two-piece bushing for improved shock absorption and easier maintenance

### Top Plate

#### Fontaine No-Slack® 6000 Series Stamped Steel

- **No-Slack lock self-adjusts to accommodate kingpin wear**
  - Switch from trailer to trailer hassle-free
  - Snug, secure connection
  - Reduces shock inputs into frame when braking/accelerating
  - Improves driver comfort
  - Reduces driver complaints
  - Extends service life of components
- **Locking trigger helps minimize high-hitching**
  - Reduces driver frustration
  - Reduces tractor, trailer and tire damage
  - The industries best defense against false coupling
  - Saves expensive wrecker and clean up bills
- **Easy coupling force—only 30 lbs!**
  - Less wear and tear on the kingpin
  - Extends service life of drivetrain components
- **Pull handle is the easiest to operate in the industry**
  - Opens easily with a simple, straight pull of the handle
  - No complicated opening sequence to remember

### Top Plate Performance Options

- **Retractable Pull Handle**— Handle retracts in the “open” position to help drivers avoid tire and fender damage.
- **Air actuated**— In-cab air release valve located on the dash opens the fifth wheel lock only when the tractor parking brakes are set.



www.fifthwheel.com • 800-874-9780 • Email: parts@fifthwheel.com

\* See your Fontaine Representative for application details or refer to Application Guide (LT-076) on website

©2019 Fontaine Fifth Wheel • LT-251 • March 2019 R4

@FontaineFifthWheel

@FifthWheelParts

Get the app @ FifthWheel.com/app