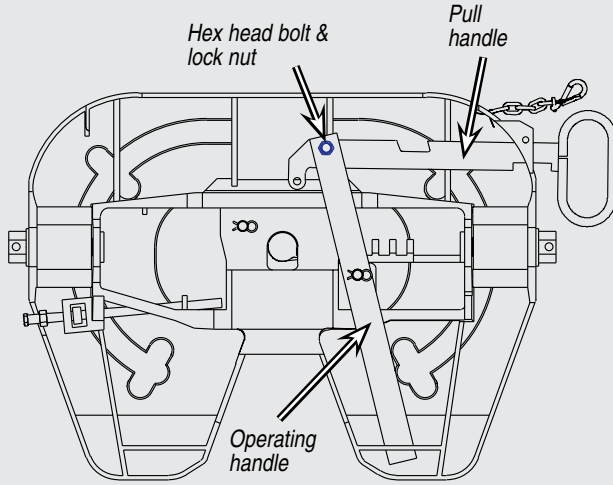


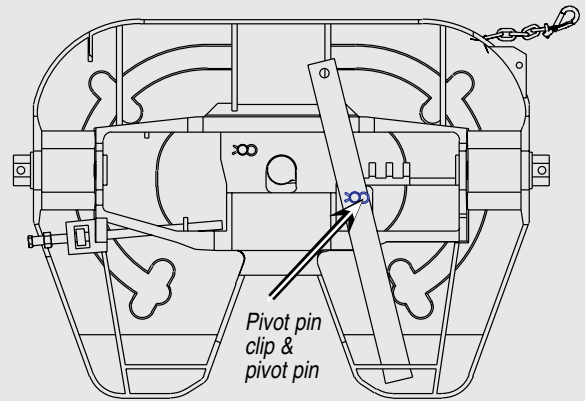
3000 SERIES REBUILD DISASSEMBLY (Cont.)

Refer to exploded view of assembly on page 6-7 to identify item numbers and parts

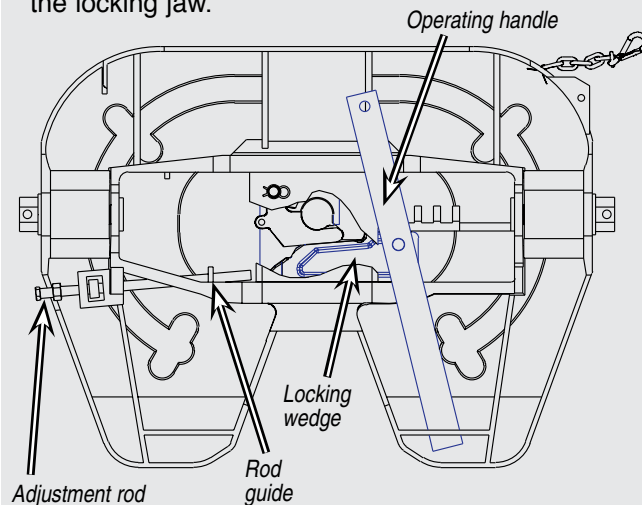
3 Remove the 16mm hex head bolt and lock nut (items 13, 14) which secures the pull handle (item 12) to the operating handle (item 15). Remove the handle assembly.



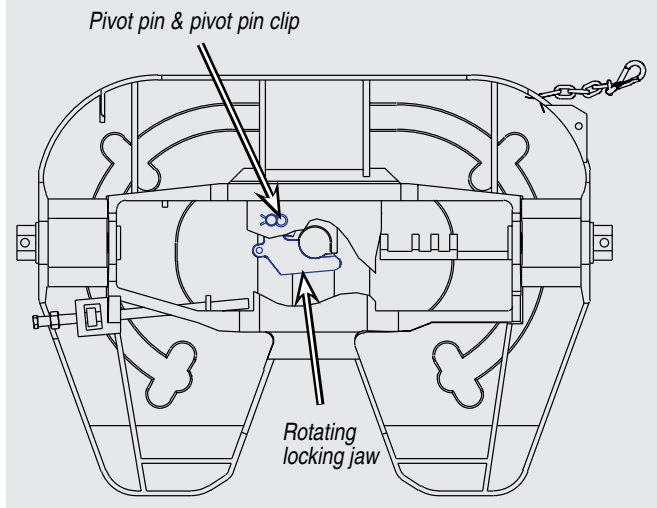
4 Remove pivot pin clip from pivot pin (items 9 and 10) which attaches the operating handle (item 15) to the locking wedge (item 17).



5 Remove the operating handle (item 15) and locking wedge (item 17) by pulling the operating handle to the open position. This will allow you to remove the operating handle from the wedge. Remove the wedge (item 17). Turn the adjustment rod (item 2) counter clockwise (outward) until it is even with the rod guide. This will eliminate interference when moving and installing the locking jaw.



6 Remove the pivot pin clip from the pivot pin (item 9). Raise the top plate and remove the pivot pin (item 10) that secures the rotating locking jaw. Remove the rotating locking jaw.



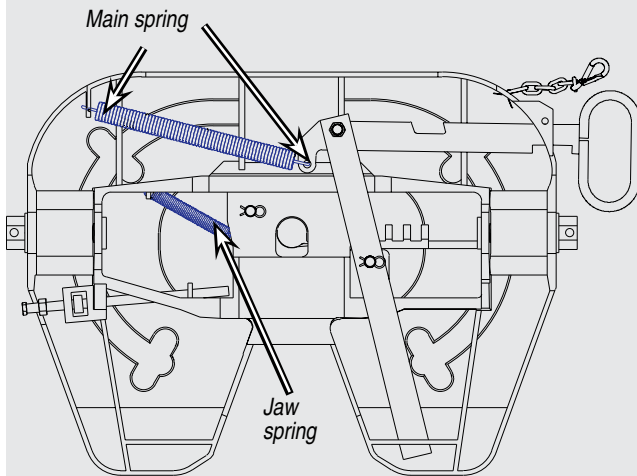
Discard used hardware – Do not reuse!

3000 SERIES REBUILD ASSEMBLY (Cont.)

Before rebuilding the assembly, check to make sure that there are no cracks in the cross members or other components. Also check bracket pin holes to ensure they are not worn oversize (pins should fit snugly).

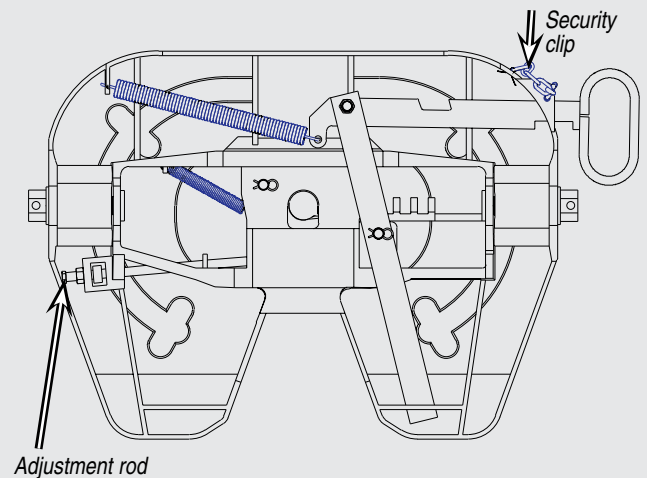
Refer to exploded view of assembly on page 6-7 to identify item numbers and parts.

- 5** Make sure the wheel is completely closed. Attach the jaw spring (item 19) to the rotating locking jaw. Now install the main springs (item 18) (two springs acting as one), to the pull handle (item 12). Install the inner spring first to the spring clip. Now install the outer spring to the spring clip.



- 6** Open the fifth wheel, insert a 2" kingpin and close the fifth wheel. Turn the adjustment rod (item 2) clockwise (inward) until it contacts the end of the locking wedge. Now turn the adjustment rod clockwise (inward) an additional 3 complete revolutions. This will give the recommended 0.525 mm (.02") running clearance. Tighten the adjustment rod jam nut (item 1). Wheel should operate freely and smoothly without binding or interference.

AFTER COUPLING TO A TRAILER OR 2" KINGPIN INSERT THE SECURITY CLIP.



Under no circumstances should a fifth wheel be repaired or used if any component (cross member, saddle bearing, etc.) is cracked.

3000 SERIES REBUILD DIAGRAM

SLTPL3000 (Left Side Release Shown)

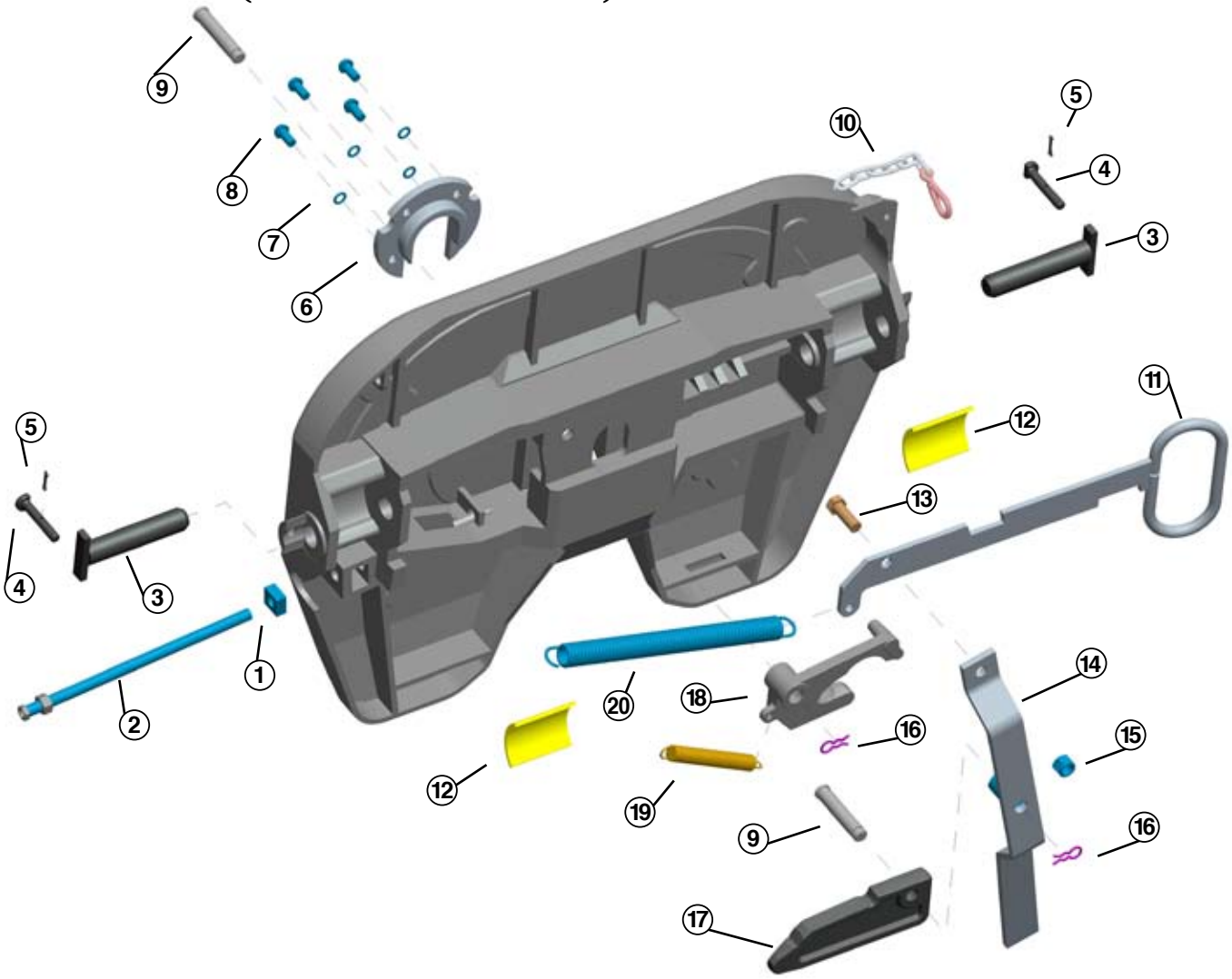


Illustration SLTPL3000

The Fontaine TechLock® System

Superior Technology Delivers
Superior Locking Performance

3000 SERIES KITS

Item No.	Description	Part Number	Quantity
①	Adjustment Rod Nut, M16 Square	*	(1)
②	Adjustment Rod	*	(1)
③	Bracket Pin	PIN-3000	(2)
④	Bracket Retainer Pin	PIN-124P	(2)
⑤	Cotter Pin	PIN-165*	(2)
⑥	Wear Ring	*	(1)
⑦	Flat Washer, M12	*	(4)
⑧	Hex Socket Button Head Screw, M12X25MM	*	(4)
⑨	Pivot Pin	*	(2)
⑩	Security Clip	CLIP-3000	(1)
⑪	Pull Handle	*	(1)
⑫	Bracket Liners	LNR-3000	(2)
⑬	Hex Head Bolt, M16 X 45MM	*	(1)
⑭	Operating Handle	*	(1)
⑮	Nylok Nut, M16	*	(1)
⑯	Pivot Pin Clip	*	(2)
⑰	Locking Wedge	*	(1)
⑱	Rotating Locking Jaw	*	(1)
⑲	Jaw Spring	*	(1)
⑳	Main Spring	*	(1)
<small>Not Pictured</small>	Bracket Bushings	BSH-3000	(2)

Note: Available left side (driver's side) only. * Only available in a Fontaine Parts Kit

FFW Genuine KITS

Item No.	Description	Quantity
KIT-OPR-3000L		
3000 Series Operating Handle Kit		
13	Hex Head Bolt	1
14	Operating Handle	1
15	Nylok Nut	1
KIT-PIN-3000		
3000 Series Pin Kit		
3	Bracket Retainer Pin	2
4	Bracket Pin	2
5	Cotter Pin	2
<small>Not Pictured</small>	Bracket Bushings	2
KIT-PUL-3000		
3000 Pull Handle Kit		
11	Pull Handle	1
13	Hex Head Bolt	1
15	Nylok Nut	1
KIT-RING-3000		
3000 Wear Ring Kit		
6	Wear Ring	1
7	Flat Washer	4
8	Hex Socket Button Head Screw	4
KIT-ROD-3000		
3000 Adjustment Rod Kit		
1	Adjustment Rod Nut	1
2	Adjustment Rod	1
KIT-RPR-3000L		
3000 Repair Kit		
9	Pivot Pin	2
16	Pivot Pin Clip	2
17	Locking Wedge	1
18	Rotating Locking Jaw	1
19	Jaw Spring	1
20	Main Spring	1

KIT-RPR-3000L



KIT-RING-3000





www.fifthwheel.com