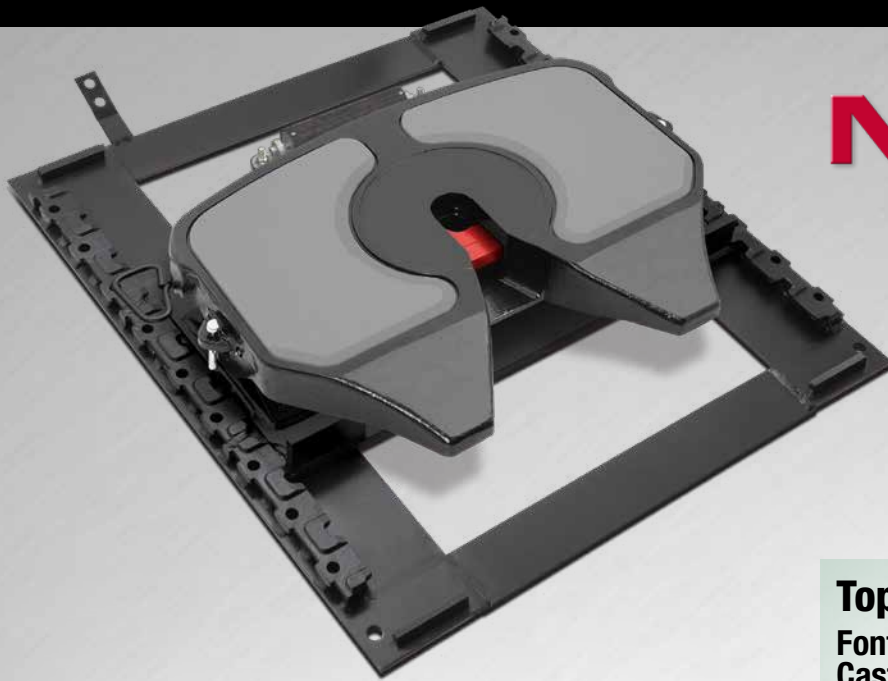


FONTAINE NO-SLACK®

7000CLWB

Handles multiple applications
Grease-free top plate surface
2-inch slide increments

Standard/Moderate duty
On highway only
55,000 lbs vertical load
150,000 lbs drawbar pull
Approx top plate weight 248 lbs



Mounting Bracket

Fontaine LWB Light Weight Air Slide Bracket

- Innovative weight saving design is lighter than its predecessor without losing an ounce of capacity— Save 20 to 50 lbs depending on configuration
- Computer-aided design features a smaller footprint with steel reinforcement for strength and durability
- New greaseless bracket liner provides consistent lubrication, reduces wear (no metal-to-metal contact) and cuts maintenance costs
- Two-inch slide increments give you greater versatility for improved payload distribution
- Quad-Lock four-point locking system increases locking surface area for greater stability and improved wear characteristics
- Automatically removes slack from the slide assembly for a smoother ride and longer life
- Dual durometer two-piece bushing for improved shock absorption and easier maintenance

Top Plate

Fontaine No-Slack® 7000CC Series Cast Steel with Clean Connect™ inserts

- Clean Connect™ inserts reduce friction so that grease is not necessary between the surface of the fifth wheel and the trailer plate
- No-Slack lock self-adjusts to accommodate kingpin wear
 - Switch from trailer to trailer hassle-free
 - Snug, secure connection
 - Reduces shock inputs into frame when braking/accelerating
 - Improves driver comfort
 - Reduces driver complaints
 - Extends service life of components
- Locking trigger helps minimize high-hitching
 - Reduces driver frustration
 - Reduces tractor, trailer and tire damage
 - The industries best defense against false coupling
 - Saves expensive wrecker and clean up bills
- Easy coupling force—only 30 lbs!
 - Less wear and tear on the kingpin
 - Extends service life of drivetrain components
- Pull handle is the easiest to operate in the industry
 - Opens easily with a simple, straight pull of the handle
 - No complicated opening sequence to remember

Top Plate Performance Options

- **Air actuated**— In-cab air release valve located on the dash opens the fifth wheel lock only when the tractor parking brakes are set.
- **LST Lock Sensing Technology**— Electronic sensors let the driver know that the kingpin is correctly positioned inside the lock and that the fifth wheel is closed. When the sensors indicate a successful coupling, a green light illuminates. After coupling, the system continuously monitors the connection and warns the driver with a red light if a change occurs.



www.fifthwheel.com • 800-874-9780 • Email: parts@fifthwheel.com

* See your Fontaine Representative for application details or refer to Application Guide (LT-076) on website

©2020 Fontaine Fifth Wheel • LT-253 • October 2020 R4



A Marmon |
Berkshire Hathaway
Company

Get the app @ FifthWheel.com/app

FontaineFifthWheel

@FifthWheelParts

