



## Repair

### Bracket pin and bushing kit (KIT-PIN-191)

Item	Qty.
1-piece bushing	2
Bracket pin	2
Bracket retainer pin	2
Cotter pin	2



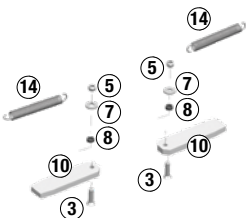
### Bushing kit (BSH-150)

1-piece bushing



### Repair kit (KITRPAWB)

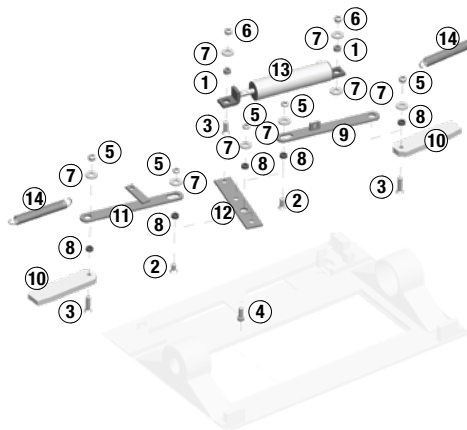
③ Flat head socket, 1/2" -13 x 2", grade 5	2
⑤ Hex jam nut, 1/2" -13, NY	2
⑦ Flat washer, 1/2" I.D., .132 Type A	2
⑧ Spacer bushing	2
⑩ Locking wedge slide assembly	2
⑭ Locking member spring	2



## Rebuild

### Rebuild kit (KITRXAWB)

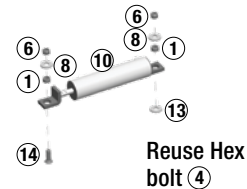
Item Description	Qty.
① Spacer bushing	2
② B Flat head socket, 1/2" -13 x 1", grade 5	2
③ Flat head socket, 1/2" -13 x 2", grade 5	3
④ Hex head bolt, 1/2" -13 x 1.2", grade 5	1
⑤ Hex jam nut, 1/2" -13, NY	5
⑥ Hex lock nut, 1/2" -13, grade "C"	2
⑦ Flat washer, 1/2" I.D., .132 Type A	8
⑧ Spacer bushing	5
⑨ Pull bar slide bracket	1
⑩ Locking wedge slide assembly	2
⑪ Pull bar slide bracket	1
⑫ Latching Lever	1
⑬ Composite Air Cylinder	1
⑭ Locking member spring	2



## Replace

### Cylinder kit (CYL-COMP)

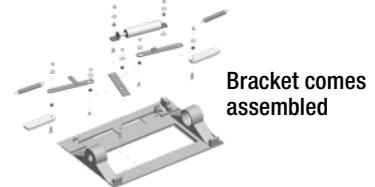
Item	Description	Qty.
①	Spacer bushing	2
⑬	Composite Air Cylinder	1
③	Flat head socket, 1/2" -13 x 1-1/2", grade 5	1
⑦	Flat washer, 1/2" I.D., .132 Type A	2
⑥	Hex lock nut, 1/2" -13, grade "C"	2



### Air slide bracket

Part Number	Mounted Height*
BKTAWB6PT	6-3/4"
BKTAWB7PT	7-3/4"
BKTAWB8PT	8-3/4"
BKTAWB9PT	9-3/4"
BKTAWB10PT	10-3/4"

\*Height is measured from top of truck frame to top of fifth wheel



### Slide rails

Part Number	Slide Travel	Overall Length
SLR12B	12"	42"
SLR16B	16"	46"
SLR24B	24"	54"
SLR36B	36"	66"
SLR48B	48"	78"

